

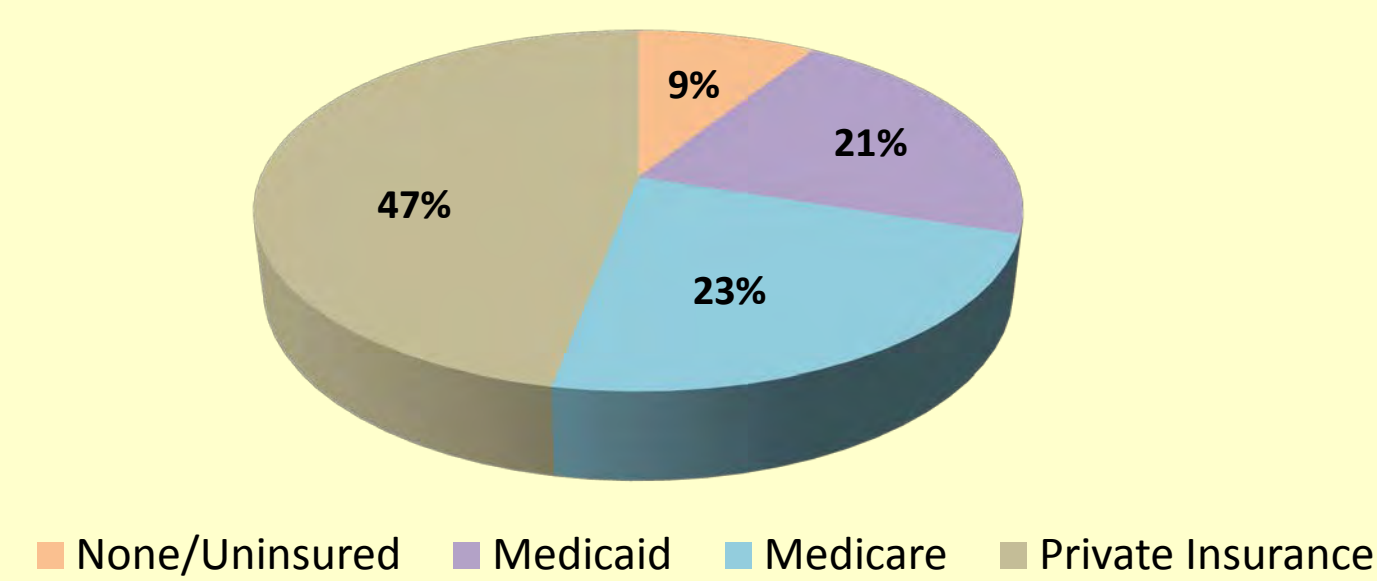
Rural Elder Care Coordination on Cape Cod: A Community-Based Approach to Closing the Gaps

Kazmira Nedeau (Grants Submission & Compliance Analyst) & Andy Lowe (Director of Program Management Resources)
Outer Cape Health Services, Wellfleet, MA

WHO WE ARE



- Federally-qualified health center
- Three locations on Outer Cape Cod
- Provide primary and specialty care to 16,500 patients (2015)
- Specialty care: Behavioral health, dermatology, dental, vision
- Over half of patients on public insurance or uninsured:



Population characteristics



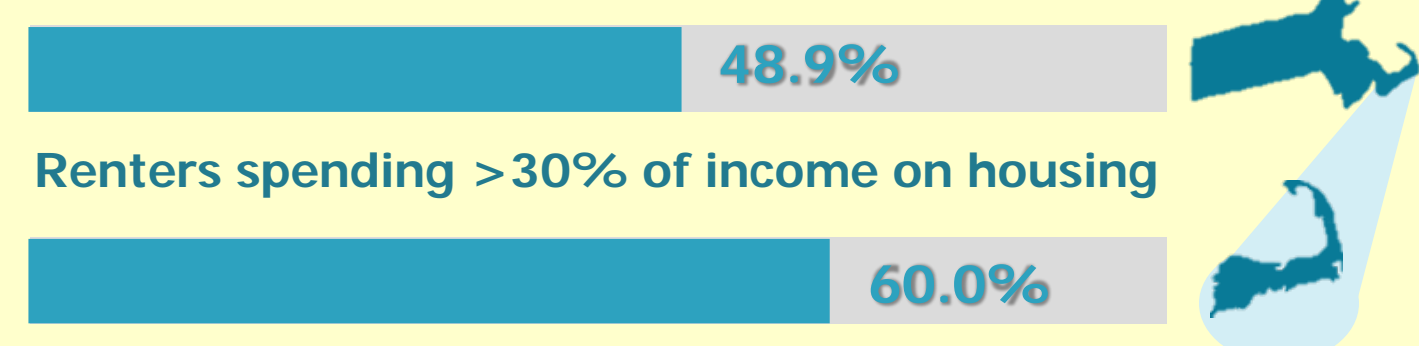
10% lower per capita income than Massachusetts (2010-2014)



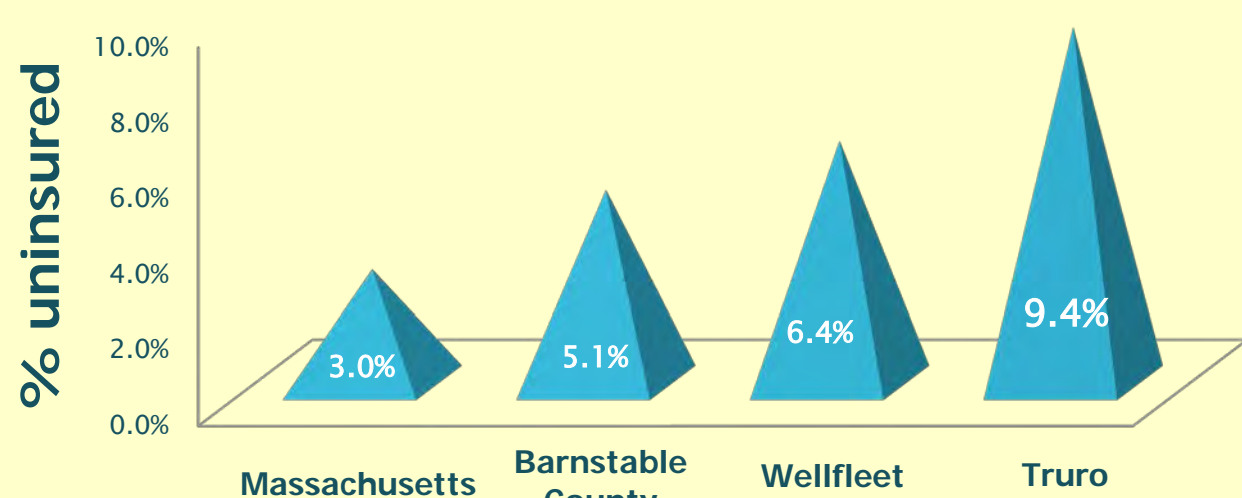
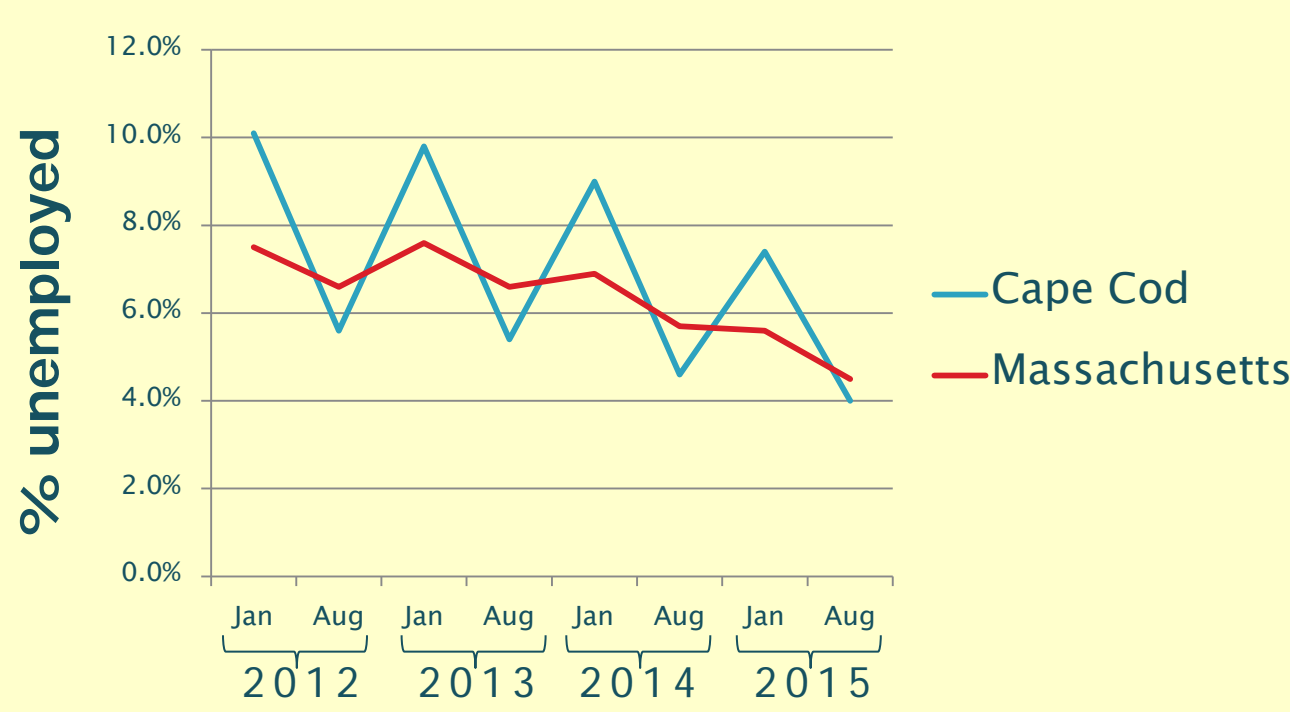
Less housing is available; highest number of units for seasonal use (35.5%) compared with all other Mass. counties



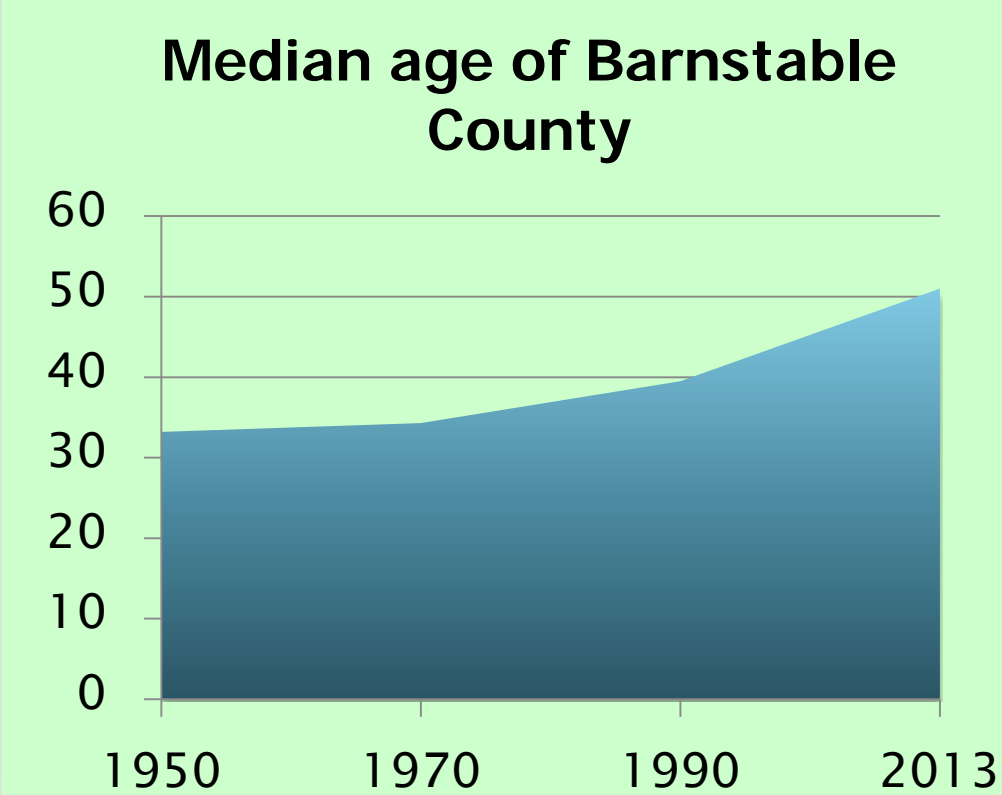
Rents are expensive



Seasonal employment, higher unemployment



AN AGING POPULATION

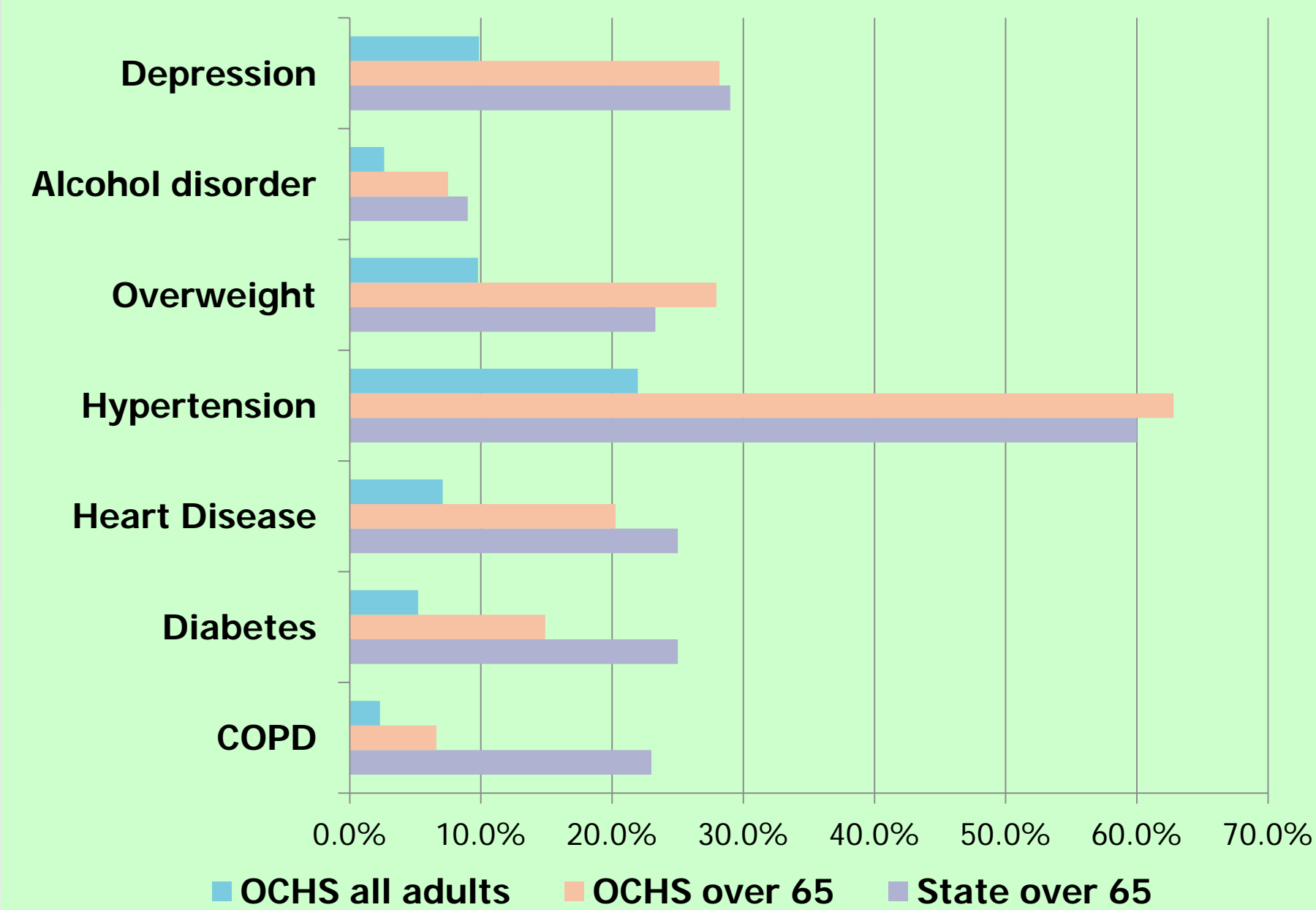


CAPE COD TIMES
Oct. 8, 2011

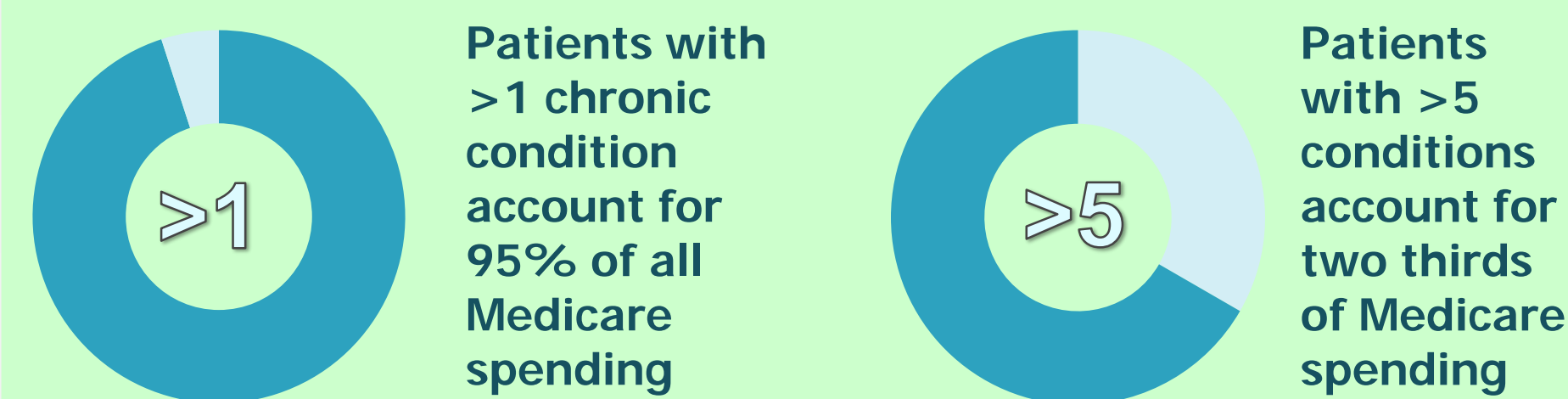
80+ population growing on Cape Cod

The number of men in their 80s is rapidly outpacing other senior citizens on Cape Cod, but reason is unclear

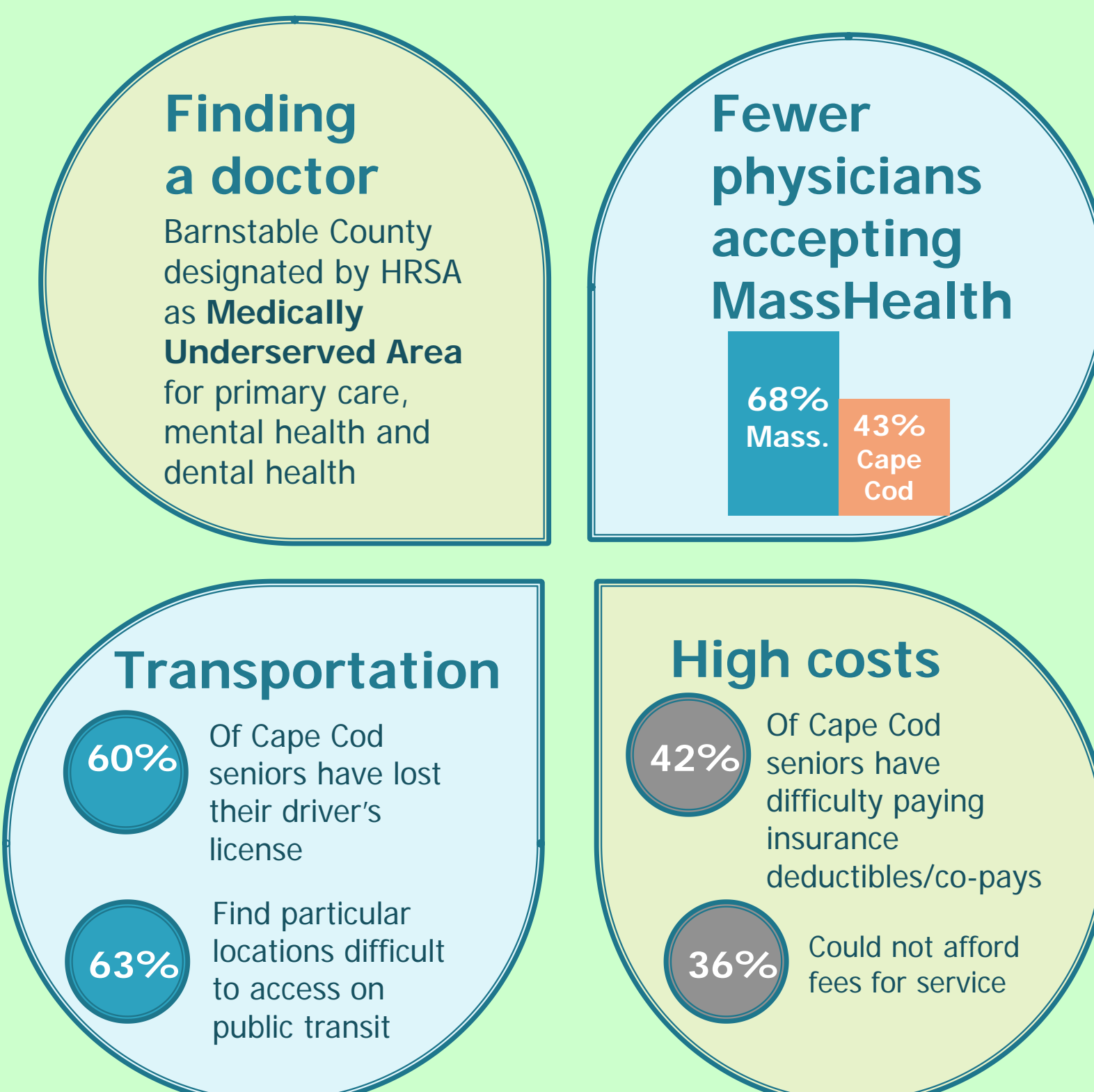
Health conditions



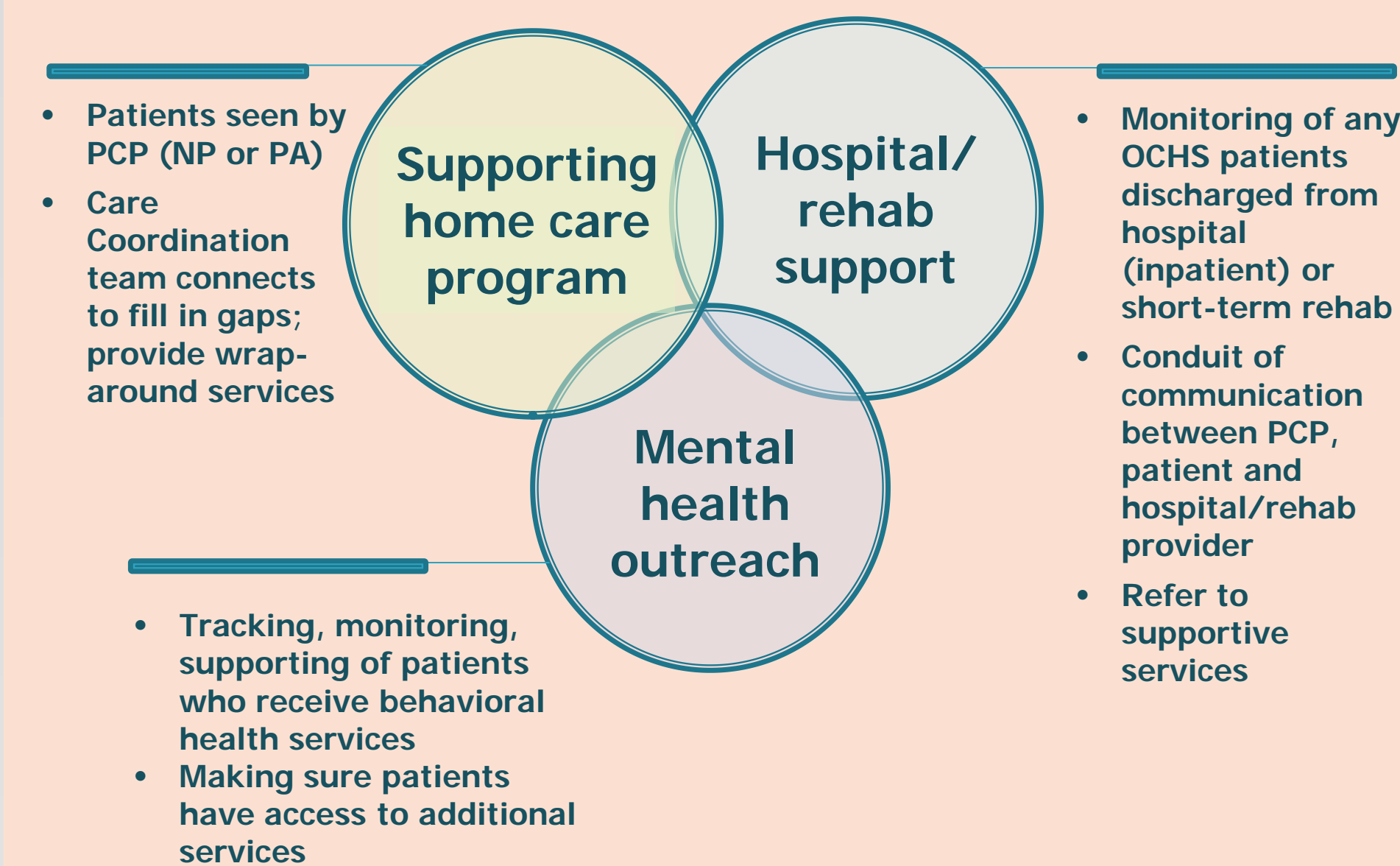
High risk = High cost



Barriers to care



CARE COORDINATION PROGRAM

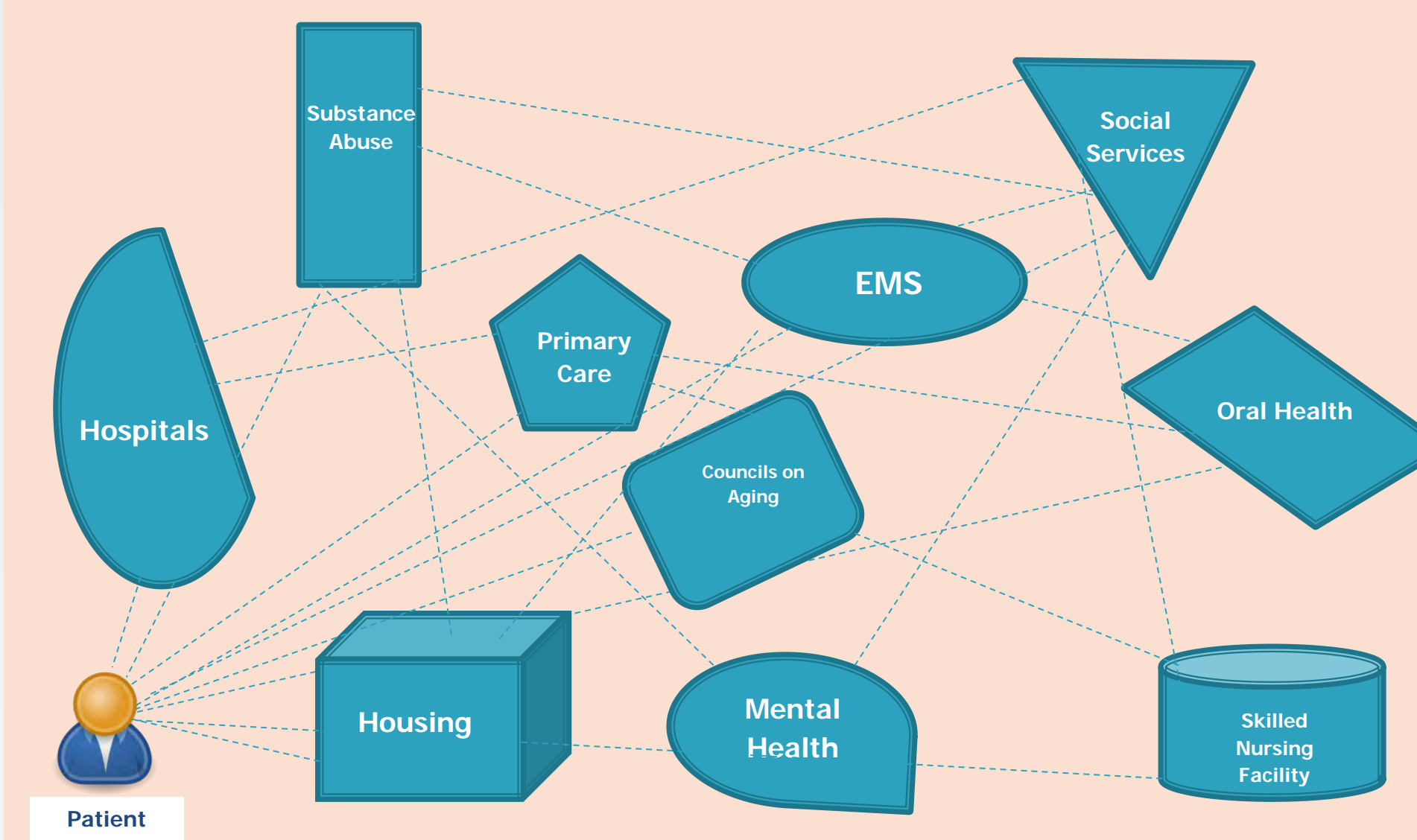


Observed benefits

- Lower rates of hospital readmissions
- Reduction in hospital days
- Reduction in days at skilled nursing facility
- Reduced cost to individual, system
- Increased time at home, quality of life

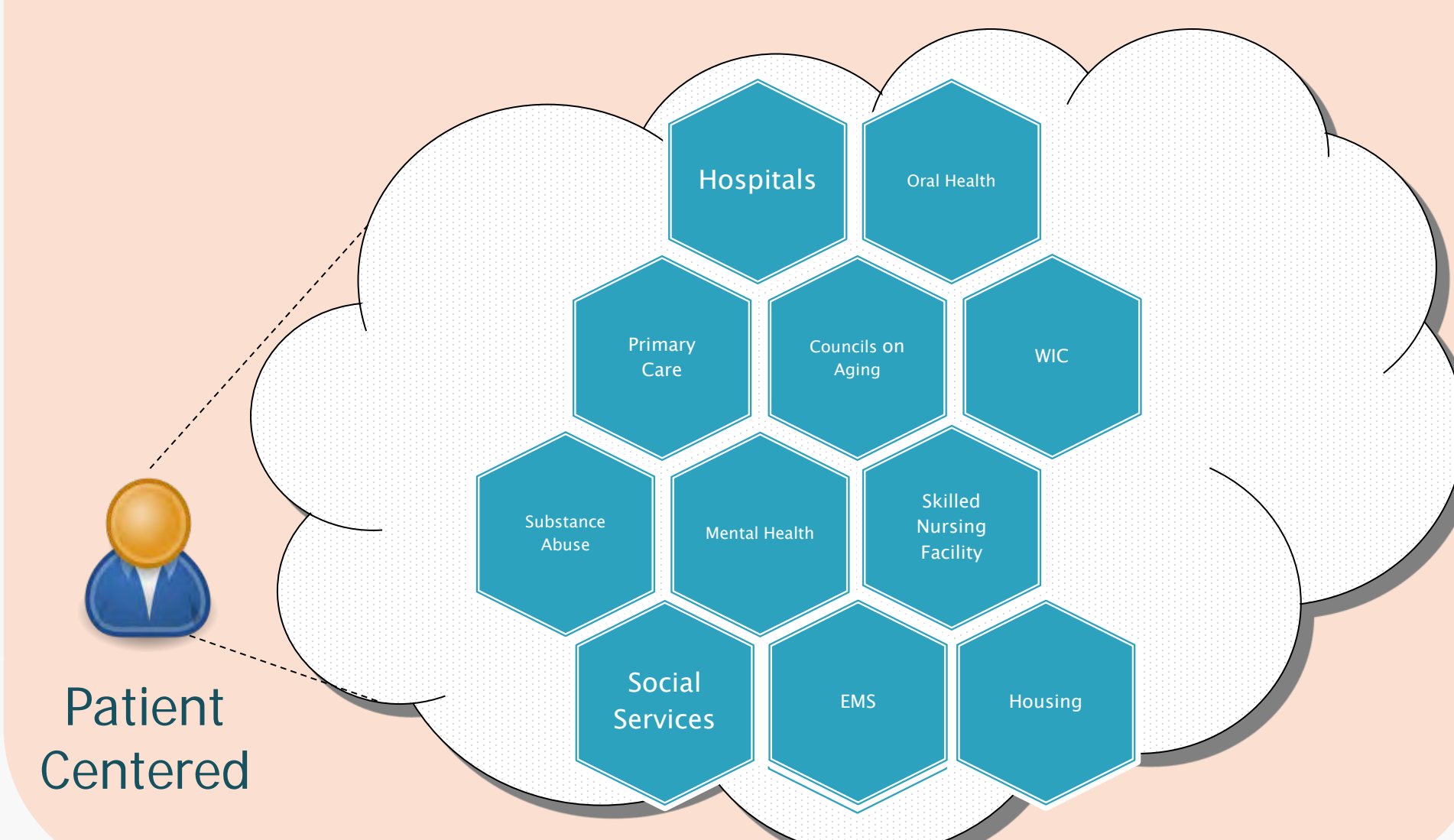
Challenges

- Sporadic or inconsistent communication among agencies involved in patients' care
- Difficult to close loop on referrals
- Fractured continuum of care places burden on patient



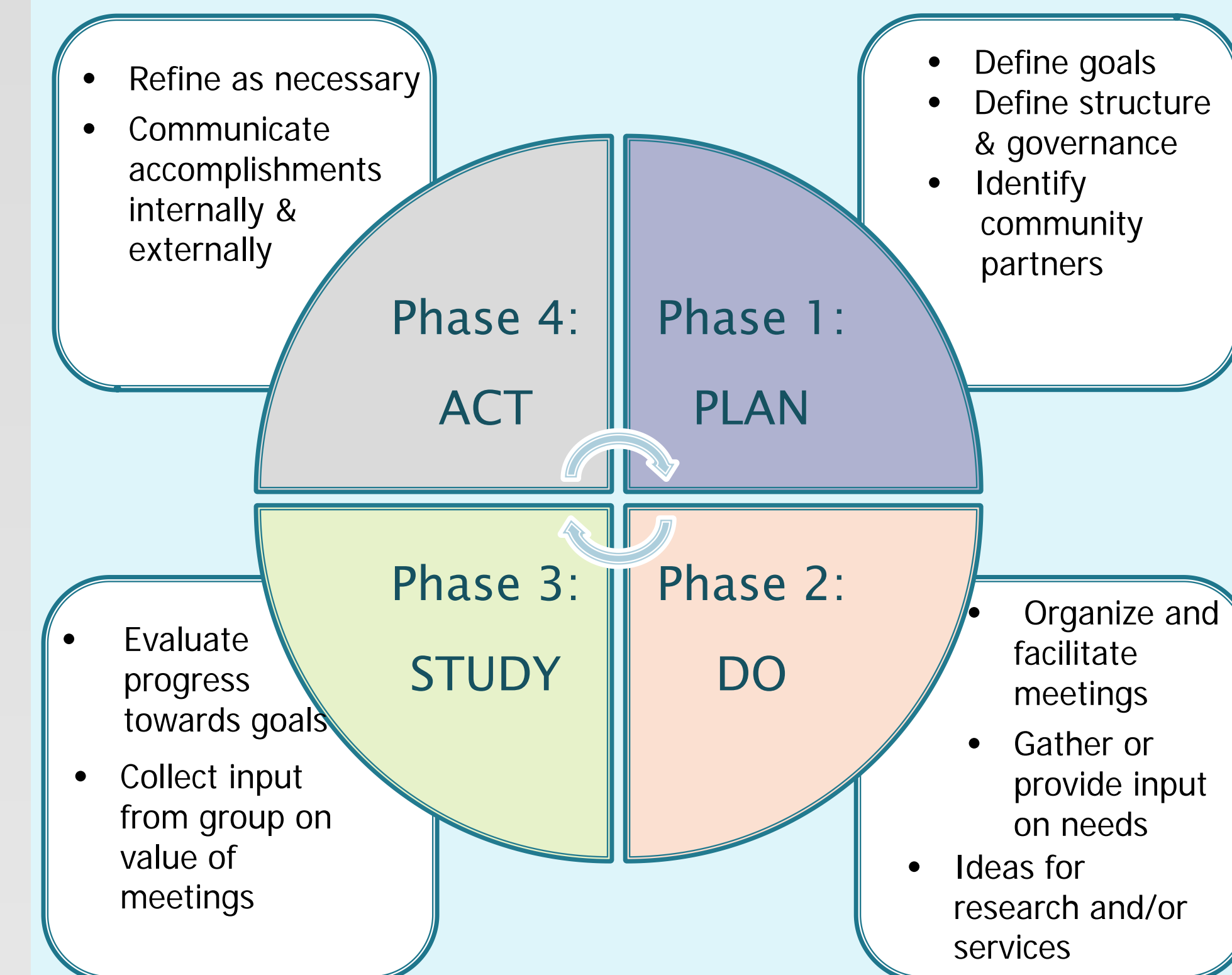
The goal

Communication is consistent among agencies, resulting in greater focus on the patient's needs and provision of wrap-around services.



BUILDING A NETWORK

A critical success factor in improving the Care Coordination program will be building a network of partners in the community to provide input and share resources



Key considerations

- Marathon, not a sprint
- Iterative process; will take shape over time
- Participation of consumers needed for validity, efficacy
- Solution should be responsive, not prescriptive

Challenges & questions

- How to get people excited about something that's inherently difficult to define
- Creating a self-governing body with shared goals
- Empowering participants, particularly consumers, to take leadership roles
- What are the measures of efficacy of care coordination?
- Does care coordination increase quality of life? Sense of connection to community?

Support & potential funding

- UMMS CCTS: Drs. Ockene & Cashman
- Patient Centered Outcomes Research Institute
- Town grants, Cape & Islands United Way

References

- Barnstable County Department of Human Services. Cape Cod senior and elder residents in the 21st century: Summary of findings. 2010 May.
- Barnstable County Department of Human Services. CCSE21st - Vol. 3 Rev. A. Fig 2.3. Median age of Barnstable County population: In years.
- The Blue Cross Blue Shield of Massachusetts Foundation. The geography of unemployment in Massachusetts, 2009-2013
- Bragg MA. 80+ population growing on Cape Cod. Cape Cod Times. 2011 Oct 8.
- Cape Cod Commission. Coordinated public transit - Human Services Transportation Plan: Regarding FTA Section 5310 funds, enhanced mobility for seniors and individuals with disabilities. 2014 Nov 17 (draft).
- Cape Cod Healthcare. Community Health Needs Assessment Report and Implementation Plan 2014-2016. 2013.
| 7. | Centers for Medicare and Medicaid Services. Chronic conditions among Medicare beneficiaries. Chartbook, 2012 Edition. Baltimore, MD. 2012. |
| 8. | The Henry J. Kaiser Family Foundation. State Health Facts. Data Source: U.S. Census Bureau March 2015 Current Population Survey, 2015 Annual Social and Economic (ASEC) Supplement. |
| 9. | McCormick C. Cape Cod MassHealth patients hurting for doctors. 2014 Aug 18. |
| 10. | Minnesota Department of Health. PDSA: Plan-Do-Study-Act. |
| 11. | National Network for Collaboration. Collaboration framework - Addressing community capacity. c1995. |
| 12. | Stein CC. In focus: The demographic and socioeconomic landscape of Barnstable County. Barnstable (MA): Barnstable County Department of Human Services; 2013 Jun. |
| 13. | United Health Foundation. America's Health Rankings: State data - Massachusetts. c2016. |
| 14. | University of Massachusetts Boston, John W. McCormack Graduate School of Policy and Global Studies, Gerontology Institute. Highlights from the Massachusetts Healthy Aging Data Report: Community profiles 2014. Boston, MA: Massachusetts Healthy Aging Collaborative; c2014. |
| 15. | U.S. Bureau of Labor Statistics [Internet]. Unemployment rate - Not Seasonally Adjusted. Mountain View, CA: Google, Inc.; c2014 [updated 2016 Jan 11]. |
| 16. | U.S. Census Bureau. QuickFacts: Barnstable County, Massachusetts. 2015. |