

eScholarship@UMassChan

Lower extremity nodules in an immunocompetent woman

Item Type	Journal Article
Authors	Egbeto, Ista A.;Trivedi, Apoorva;Evan-Browning, Eric;Levin, Nikki A.
Citation	<p>Egbeto IA, Trivedi A, Evan-Browning E, Levin NA. Lower extremity nodules in an immunocompetent woman. JAAD Case Rep. 2021 Feb 18;8:96-97. doi: 10.1016/j.jdc.2020.09.032. PMID: 33659601; PMCID: PMC7896186. Link to article on publisher's site</p>
DOI	10.1016/j.jdc.2020.09.032
Rights	Copyright 2021 by the American Academy of Dermatology, Inc. This is an open access article under the CC BY-NC-ND license (http://creativecommons.org/licenses/by-nc-nd/4.0/).
Download date	2026-03-07 18:28:00
Item License	http://creativecommons.org/licenses/by-nc-nd/4.0/
Link to Item	https://hdl.handle.net/20.500.14038/41806

Lower extremity nodules in an immunocompetent woman



Ista A. Egbeto, BS,^{a,b} Apoorva Trivedi, MD,^b Eric Evan-Browning, MD,^b and Nikki A. Levin, MD, PhD^b
West Boylston, Massachusetts



Fig 1. Ista Ariane Egbeto, Apoorva Trivedi, MD, Eric Evan-Browning, MD, and Nikki A. Levin, MD, PhD

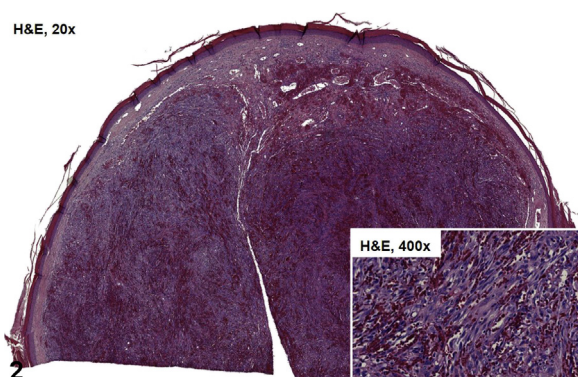


Fig 2. Ista Ariane Egbeto, Apoorva Trivedi, MD, Eric Evan-Browning, MD, and Nikki A. Levin, MD, PhD

CASE CHALLENGE PART 1

A 79-year-old otherwise healthy Puerto Rican woman is seen for a 3-month history of a rapidly enlarging mass on her right foot. The involved areas are occasionally tender, affecting her ability to walk. Physical examination reveals many confluent, deep red to purple, eroded, grapelike nodules affecting all aspects of the foot

From Tufts University School of Medicine^a; and Department of Dermatology, UMass Memorial Health Care.^b

Funding sources: The authors have no funding sources to declare. IRB approval status: Not applicable.

Corresponding author: Ista A. Egbeto, Department of Dermatology, UMass Memorial Health Care, 281 Lincoln Street, Worcester, MA 01605. E-mail: ista.egbeto@tufts.edu.

JAAD Case Reports 2021;8:96-7.
2352-5126

© 2021 by the American Academy of Dermatology, Inc. Published by Elsevier, Inc. This is an open access article under the CC BY-NC-ND license (<http://creativecommons.org/licenses/by-nc-nd/4.0/>).

<https://doi.org/10.1016/j.jdcrcr.2020.09.032>

([Figure 1A](#)) and extending to the distal part of the leg ([Figure 1B](#)). The largest confluent mass is on the heel extending to the posterior side of the ankle ([Figure 1B](#)). She has no history of immunosuppression.

Based on the clinical presentation and histologic features ([Figure 2](#)), what is the most likely diagnosis?

- A. Angiosarcoma
- B. Classic Kaposi sarcoma
- C. Bacillary angiomatosis
- D. Dermatofibrosarcoma protuberans
- E. Mycetoma

Click [here](#) to view disclosures, take the quiz, and claim CME credit.

Conflicts of interest

The authors have no conflicts of interest to declare.